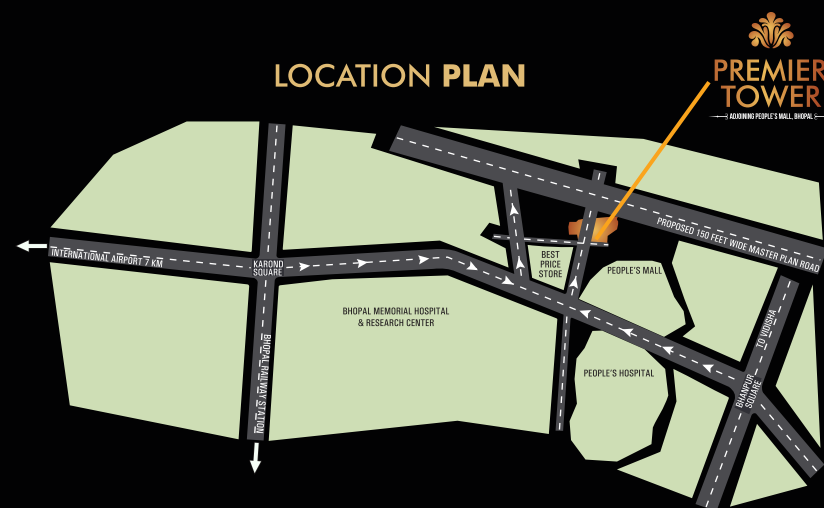




LAYOUT PLAN

LOCATION PLAN



S V INFRA DEVELOPERS
www.swadeshbuilders.in

CALL : +91 88806 00999, 90390 28001,2,4
Premier Orchard, Opp. BMHRC, Adjoining People's Mall, Bhopal

PREMIER TOWER

CLASS APART. SPACIOUS. ABSOLUTE.



BUILDING SPECIFICATIONS

STRUCTURE

R.C.C. framed structure

WALLS

Fly Ash Brick Walls with Cement Plaster

OPENINGS

Pre-engineered mild steel frames painted with enamel paint, enamel painted flush door shutters with standard fixtures, power coated sliding aluminum window with mosquito proof nets, glass louvered mild steel ventilators, safety mild steel grills and railings.

FLOORING

600 x 600mm vitrified tiles flooring in drawing, dining & bed rooms, kitchen, anti skid ceramic tiles in balconies and other open areas.

KITCHEN

Granite platform top with stainless steel sink, ceramic tiles dado upto 600mm height above platform.

TOILETS

Ceramic wall tiles up to maximum 2000mm height & anti skid floor tiles, white ceramic ware and concealed plumbing with chromium plated fixtures

WATER STORAGE

1000 liters capacity overhead PVC or similar water tank,

ELECTRIFICATION

Adequate number of electrical outlets, concealed copper wiring and circuits protected by MCBs/ fixtures.

PAINTING

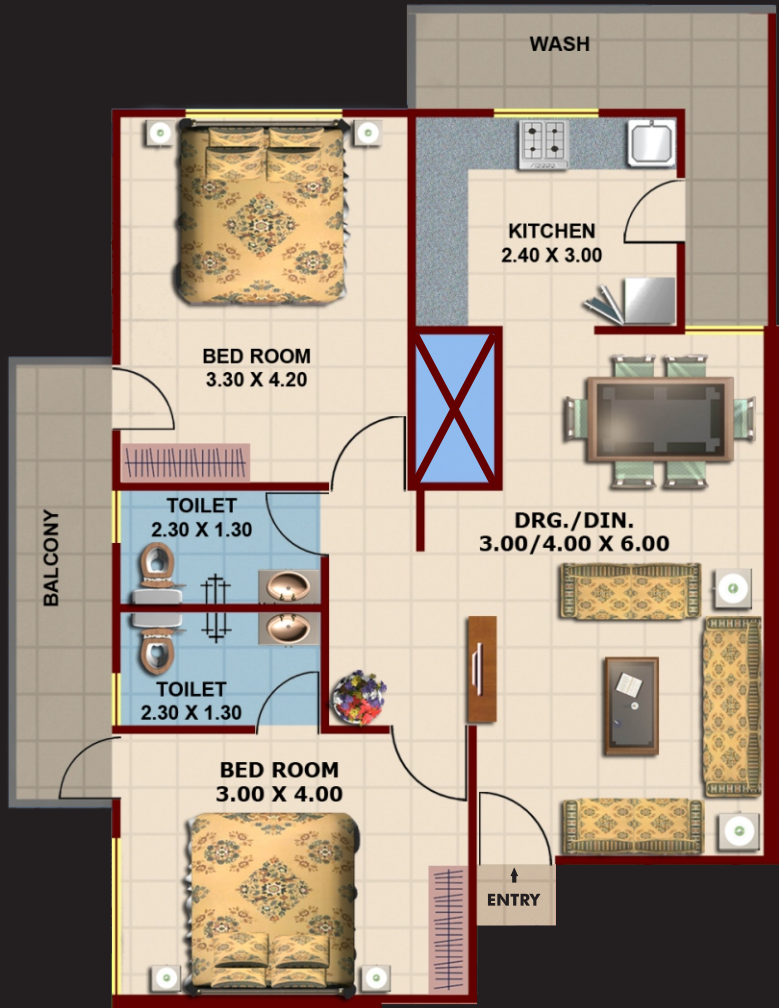
Painting with synthetic enamel paint for M.S. and wood works, oil-bound distemper for interiors and external grade paint for exteriors.

* All images are inductive and are subject to be changed as per requirement.

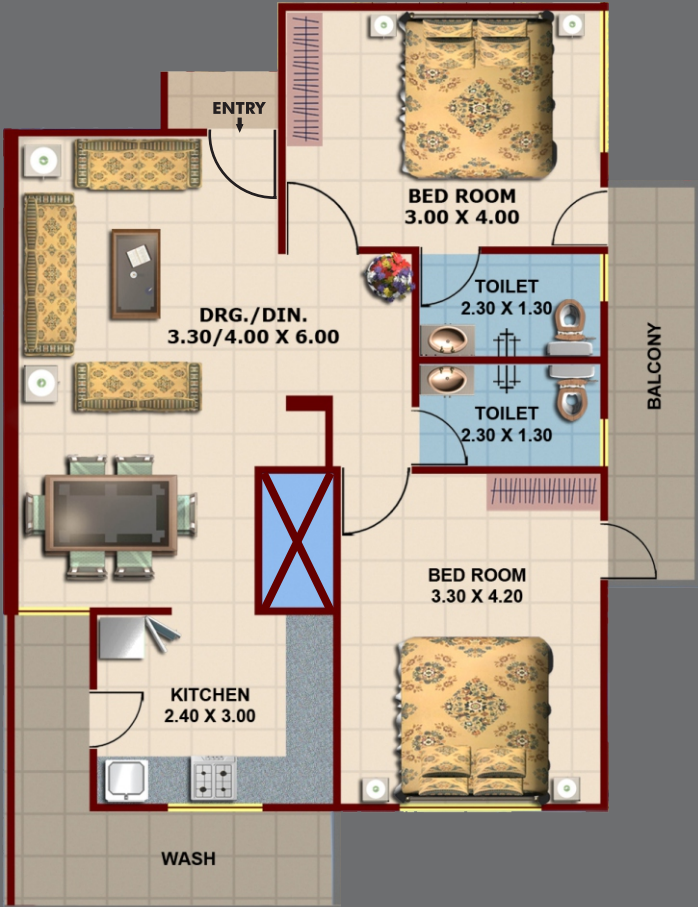
* All furniture and accessories are merely indicative.

Easement will now be a seal deal for Bhopal. Specious and Absolute is with Premier Tower all about. Offering 2 BHK flats and Shops that are ecstatically impeccable with all possible and desired amenities orbiting around. It is located in the lap of nature with easy approach to the city with Peoples mall, Best price and BMHRC in close proximity.

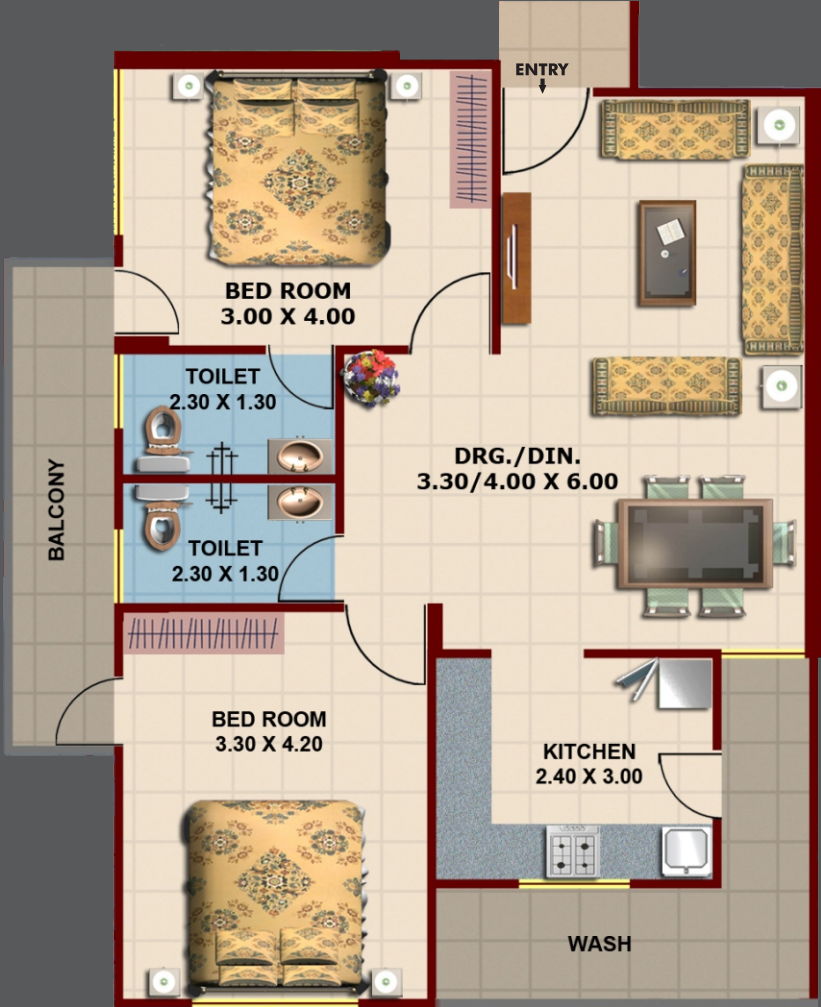
FLAT NO. P-101 TO P-105



FLAT NO. P-301 TO P-305



FLAT NO. P-201 TO P-205



FLAT NO. P-401 TO P-404

